



propriété de
CLE EN MAIN 13-16

dessiné par : VG 04 10 2016 échelle: 1/200 - 1/50 - 1/100

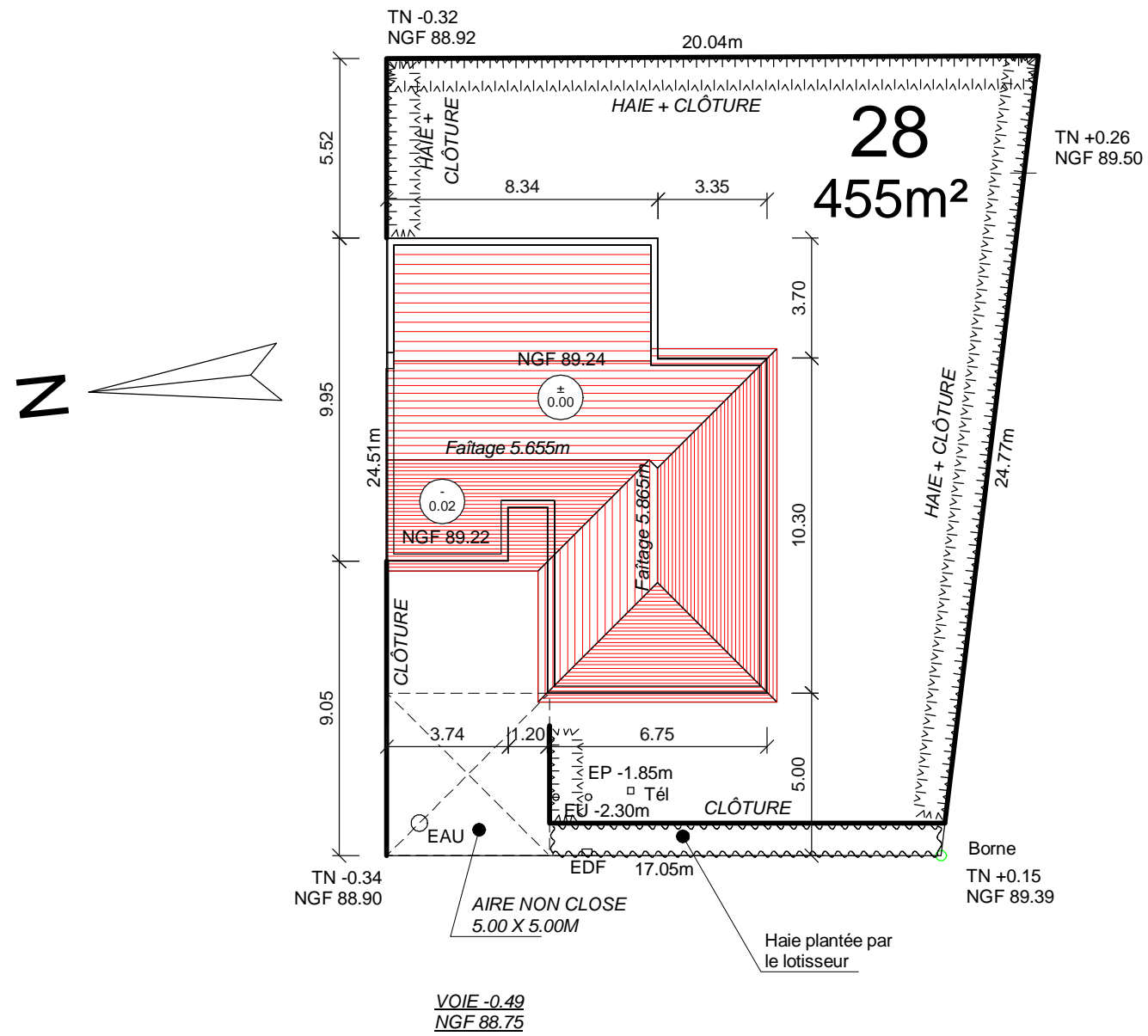
Coop Logis 
Groupe ActionLogement

53-CF137 lieu de construction:
Le Jardin des Capucines V - Lot n°28
53210 - LOUVIGNE

2 MASSE - PLANS - COUPES - FACADES

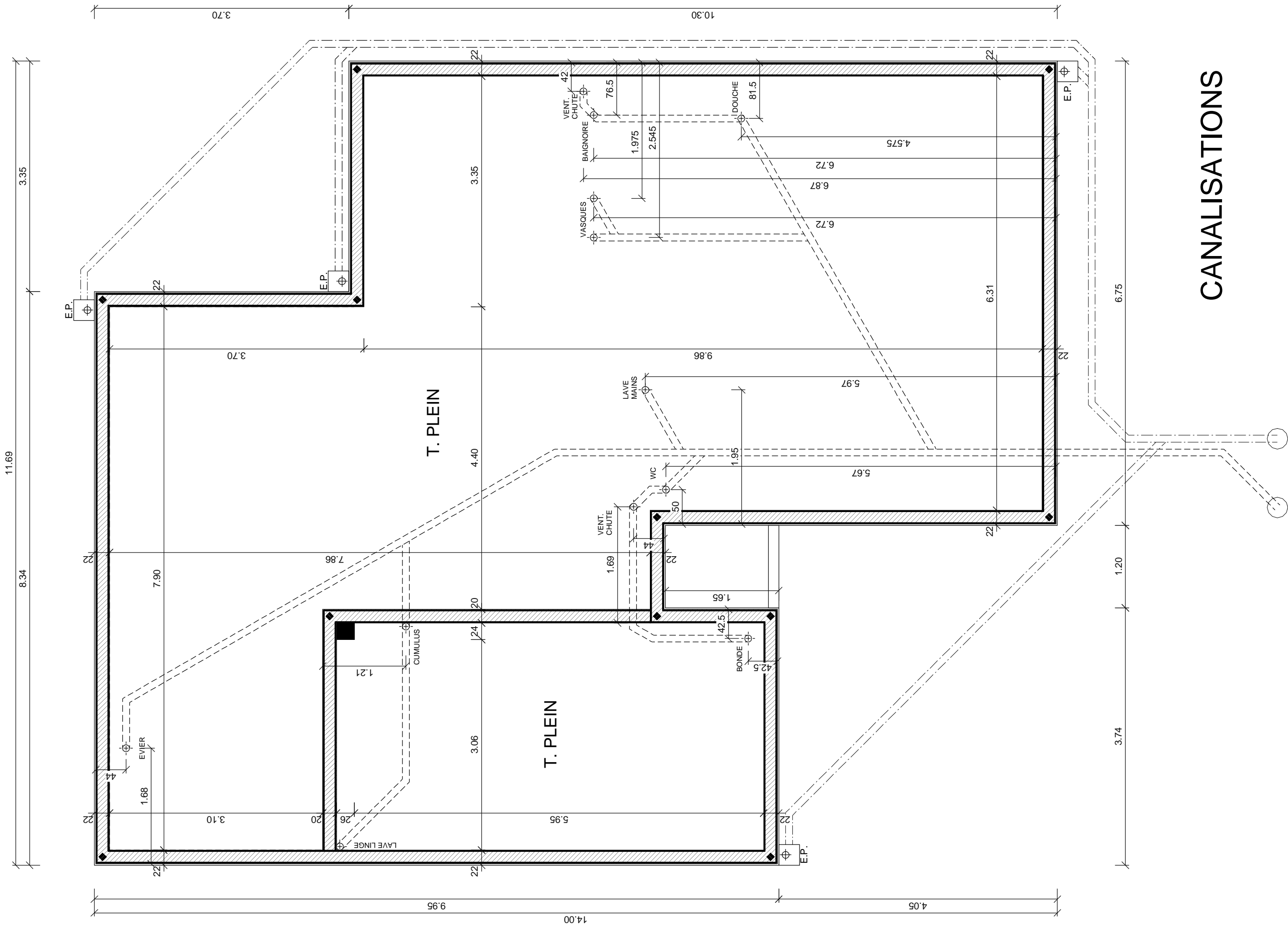
MODIFICATIONS		
indice	date	désignation
A	03.10.13	Projet

TABLEAU DES SURFACES					
surface habitable					85.75
rez de chaussée		85.75	combles		
entrée		séjour-salon	30.75	cuisine	9.63
dégagement	4.44	chambre 1	12.50	chambre 2	10.12
chambre 3	9.88	chambre 4			
wc rez de chaussée	2.24	bains	6.19	toilettes	
palier		cellier		rangement	
wc combles					
surface annexe					20.43
sous sol		rez de chaussée	20.43	combles	
garage	20.43	atelier		cave	

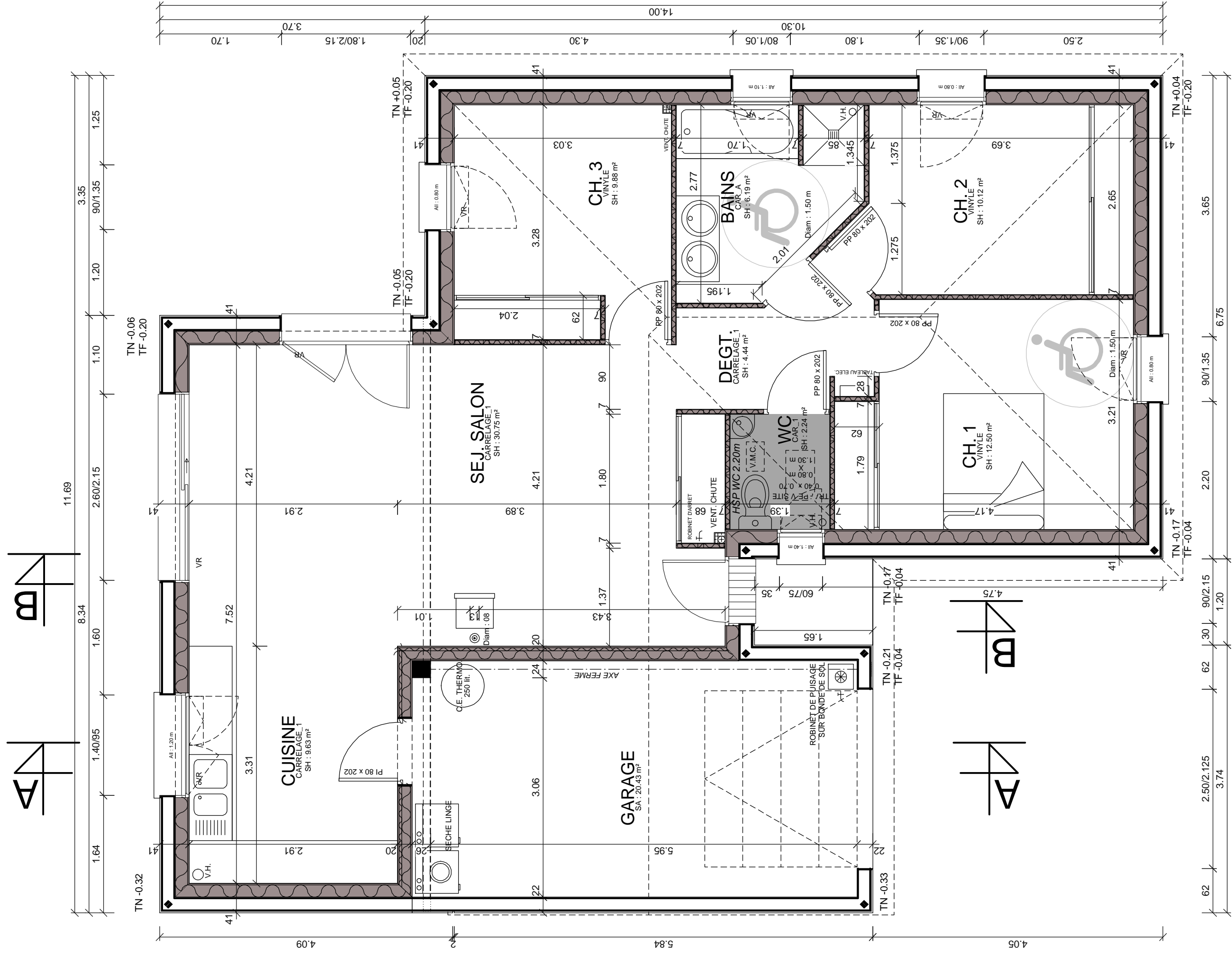


PLAN MASSE

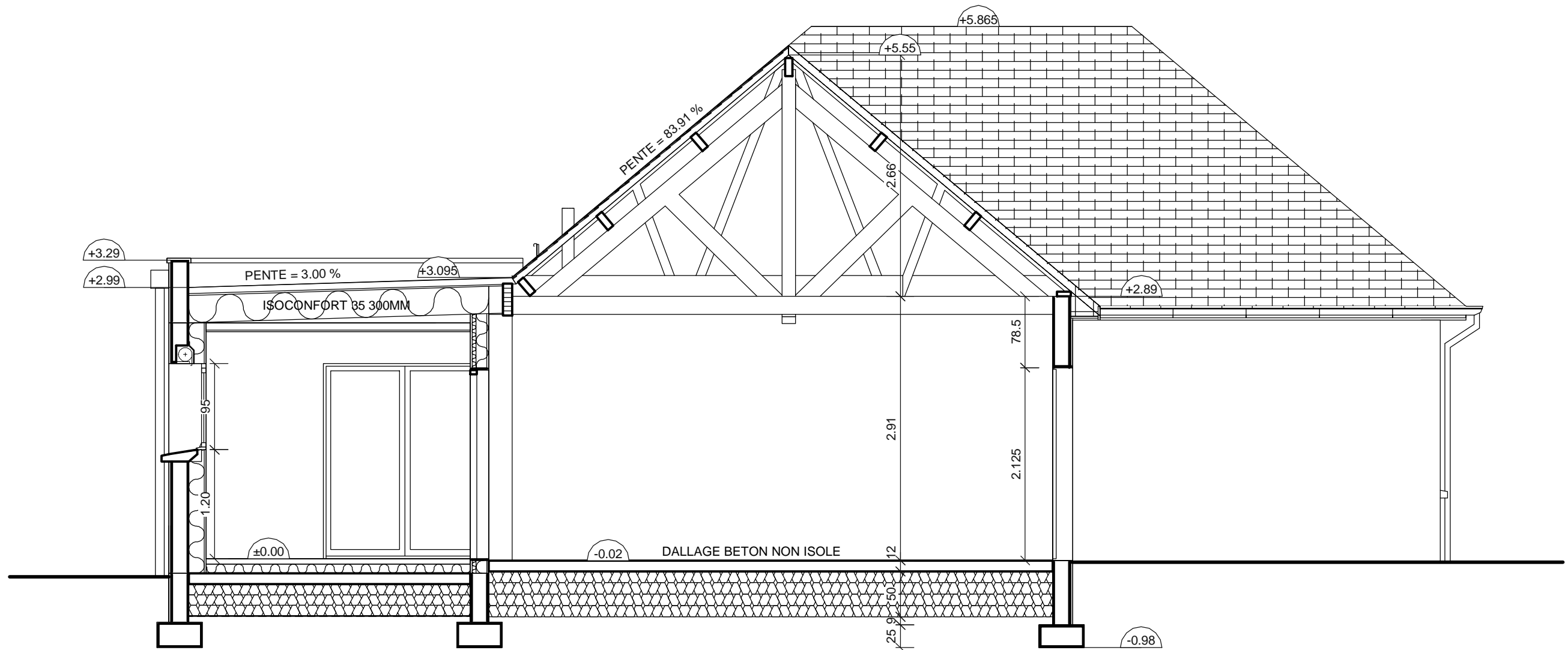
ECHELLE 1/200



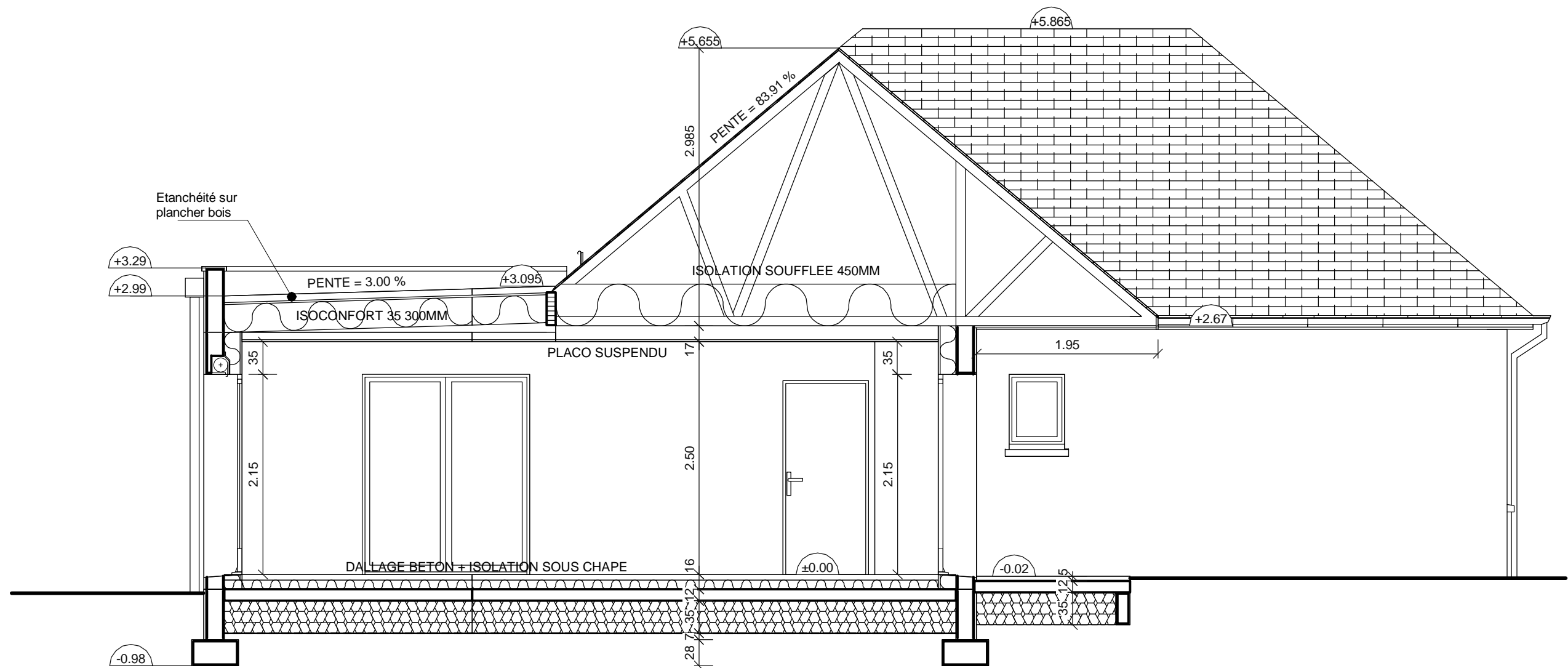
CANALISATIONS



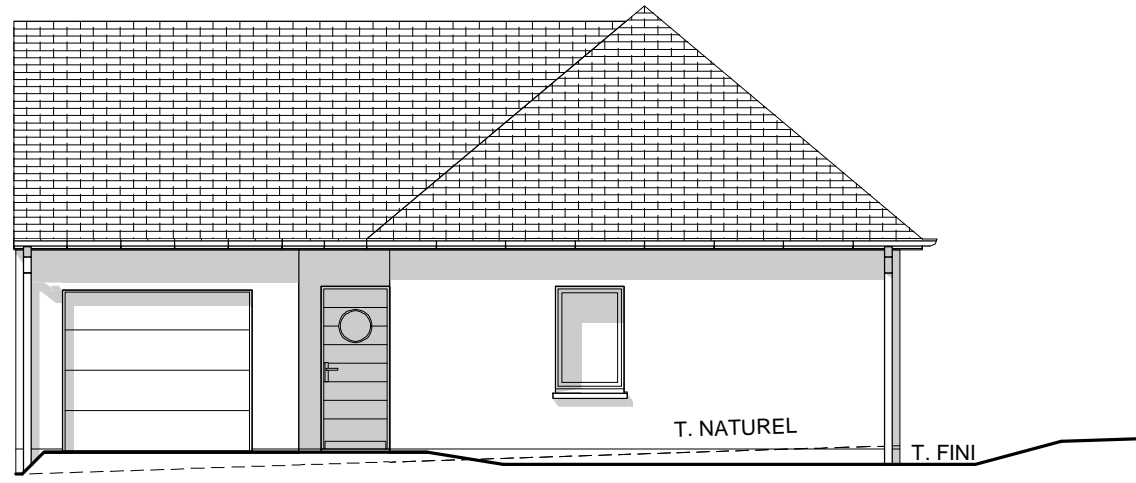
REZ DE CHAUSSEE



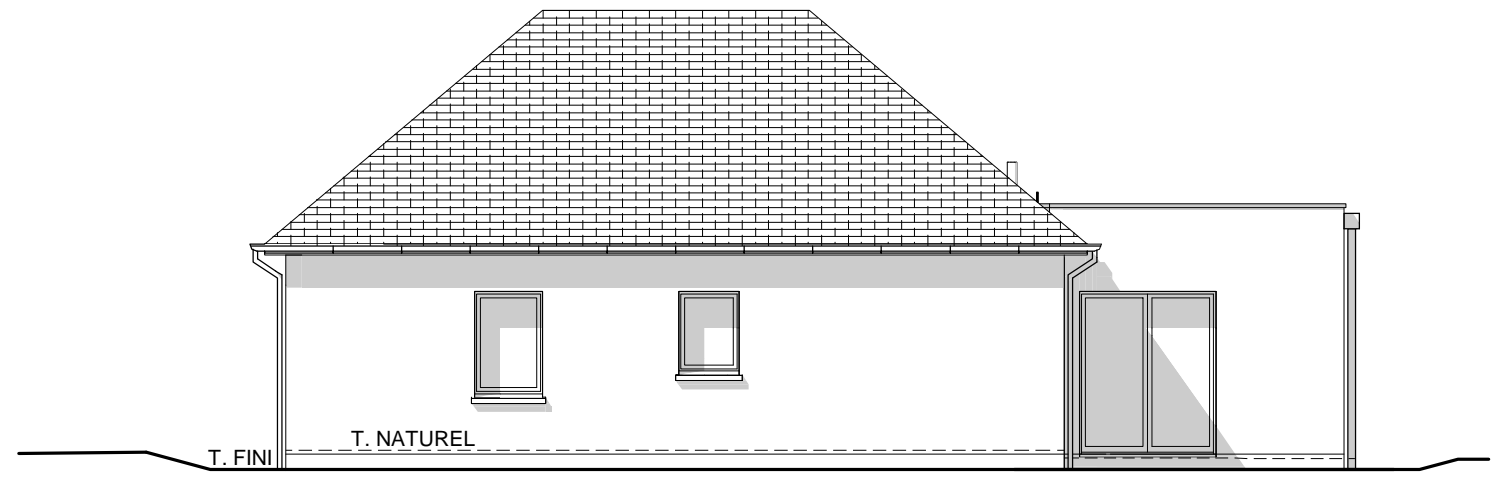
COUPE AA



COUPE BB



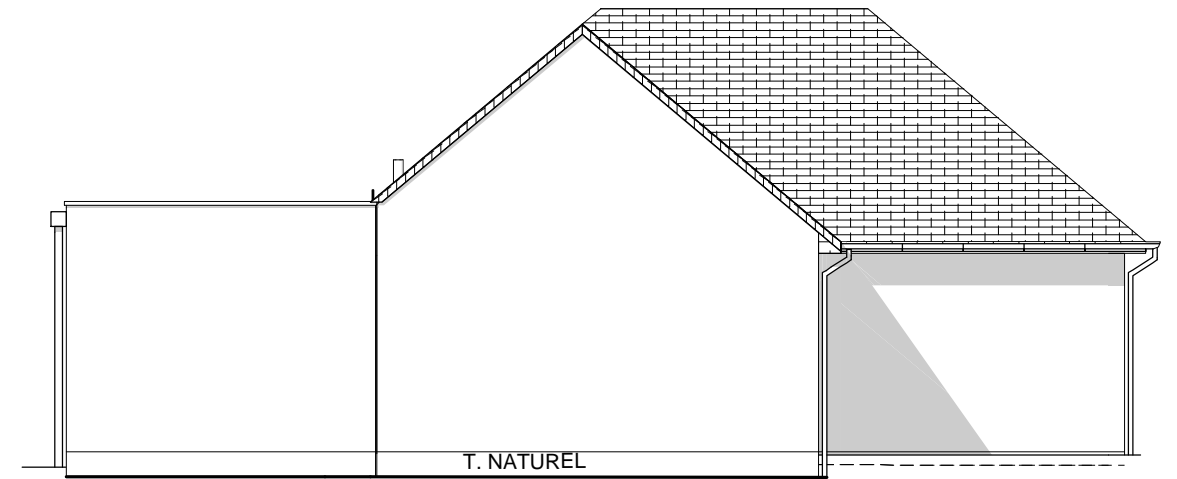
FACADE OUEST



FACADE SUD



FACADE EST



FACADE NORD

